

Farmdale Avenue

Cheshire to Signal Butte Road

Safety Improvement Project for Traffic Calming – Project Update



- Existing Conditions on Farmdale Avenue
- Proposed Traffic Calming Features
- Community Feedback Summary
- Timeline & Next Steps



Farmdale Avenue – Cheshire to Signal Butte Road

- Two-lane local street
- Posted speed limit 25mph
- No pavement markings
- Public park & retention area along north side
- History of traffic calming requests
- Included in citywide traffic calming study

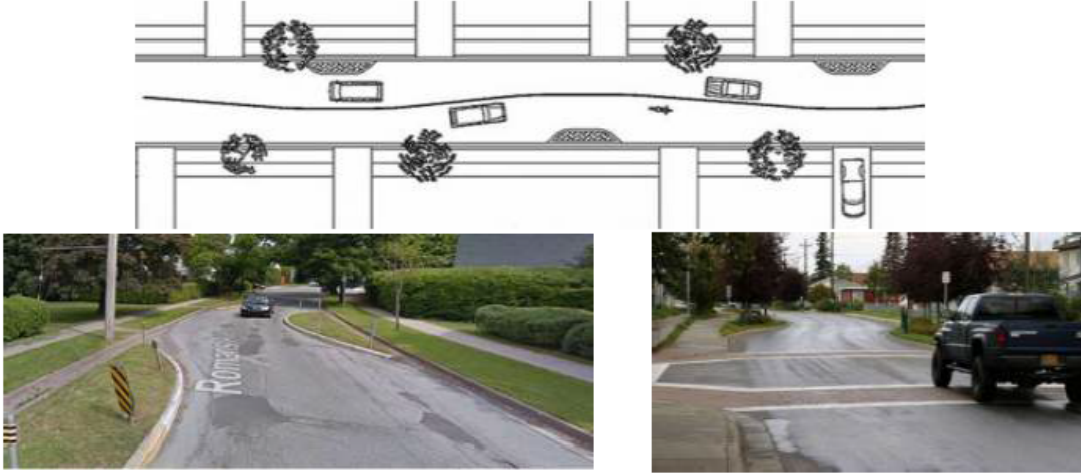
Historic Traffic Counts:

| Year | Average Daily Traffic (ADT) | 85 th % Speed (mph) | | Speed Differential from Posted Speed (mph) | |
|------|-----------------------------|--------------------------------|-----------|--------------------------------------------|-----------|
| | | <i>EB</i> | <i>WB</i> | <i>EB</i> | <i>WB</i> |
| 2014 | 1,126 | Not available | 39.3 | Not available | 14.3 |
| 2021 | 1,200 | 38.0 | 35.5 | 13.0 | 10.5 |

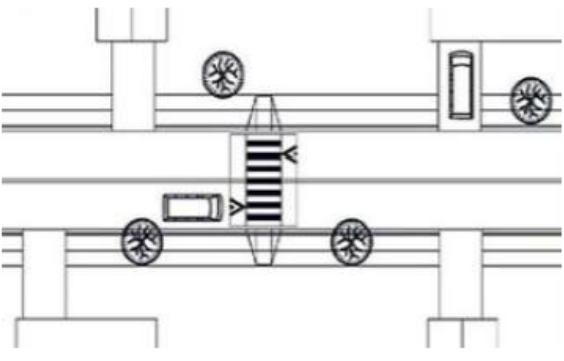



Existing Conditions



Proposed Traffic Calming Measures

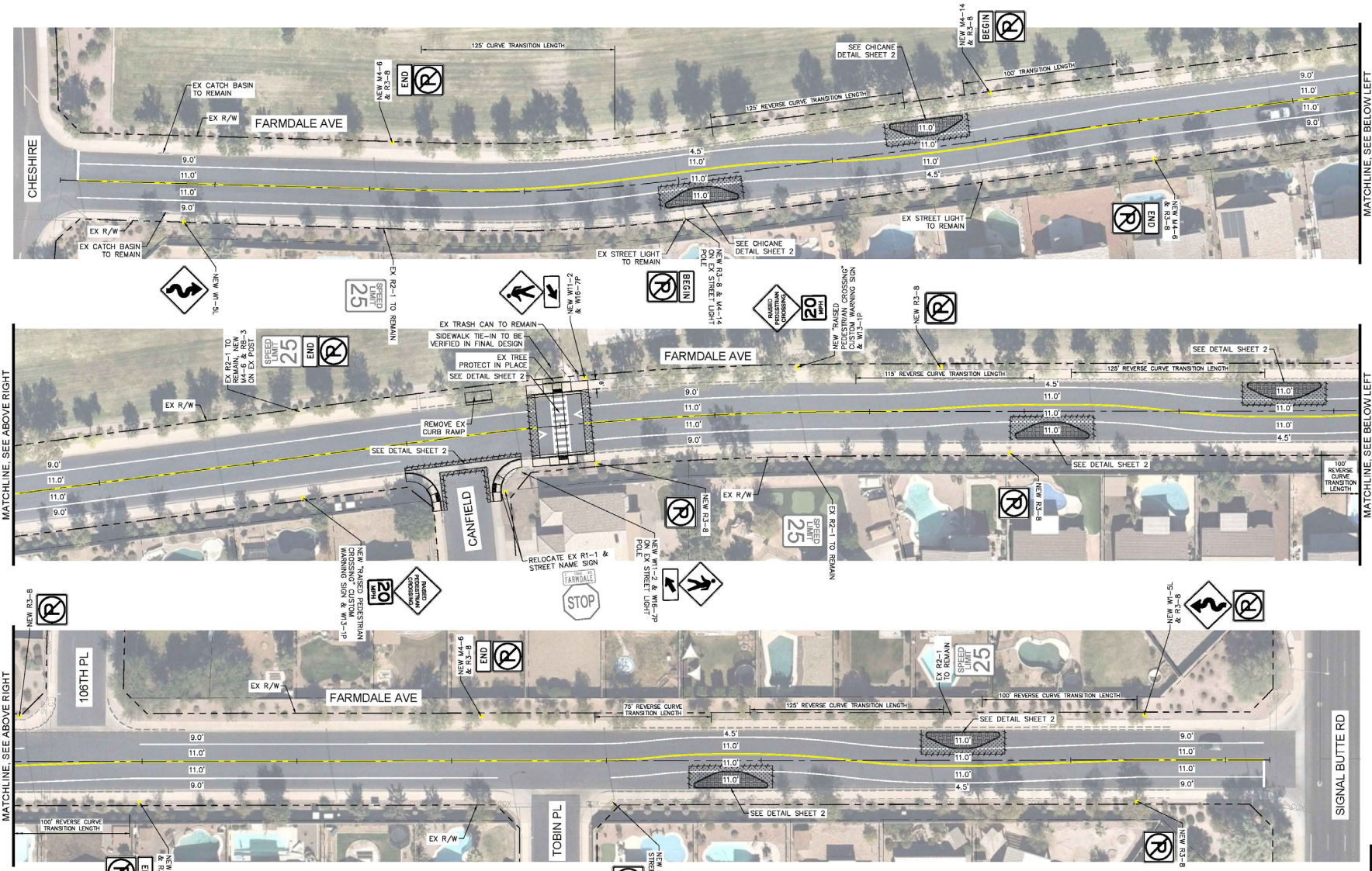
| TRAFFIC CALMING MEASURE | DESCRIPTION ¹ | CATEGORY | OBSERVED SPEED REDUCTION (MPH) | DIAGRAM / SAMPLE IMAGES |
|--------------------------|--------------------------------------------------------------------------------------------------------------------------------------------------------------|-----------------------|--------------------------------|--------------------------------------------------------------------------------------|
| Chicane Lateral Shift | <p>Realignment of street that causes travel lanes to shift in one direction.</p> <p>Chicane shifts or realigns traffic more than once along the segment.</p> | Horizontal Deflection | 3 - 9 ¹ |  |

Proposed Traffic Calming Measures

| TRAFFIC CALMING MEASURE | DESCRIPTION ¹ | CATEGORY | OBSERVED SPEED REDUCTION (MPH) | DIAGRAM / SAMPLE IMAGES |
|-----------------------------------------------------------------------------------|---------------------------------------------------------------------------------------------------------------------------------------------------------------------------------------------------------------------------------|------------------------|--------------------------------|---------------------------------------------------------------------------------------------------------------------------------------------------------------------------|
| Raised Crosswalk | Variation of a flat-topped speed table that is marked and signed as a pedestrian crossing. Typically 3 to 6 inches above street level and 22 feet in length, with the 10-foot flat top conforming to a desired crosswalk width. | Vertical Deflection | 11 ² |   |
| Pavement Markings (On-Street Parking, Narrow Lanes/Shoulder, Centerline/Edgeline) | Narrows roadway travel lanes by adding side friction to traffic flow. Parking can be allowed on one or both sides of roadway. | Street Width Reduction | 1 - 5 ¹ |   |

Farmdale Avenue

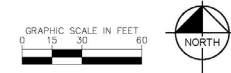
DATE: 8/12/21 K:\PHK\ROADWAY\191500019 - MESA TRAFFIC CALMING\CD012-SHEETS\LD_FARMDALE - CHESHIRE TO SIGNAL BUTTE\PL01.DWG



LEGEND

- AC PAVEMENT
- STAMPED CONCRETE MEDIAN PAVEMENT

- NOTES:
1. ALL DIMENSIONS ARE FROM CENTER OF STRIPE TO FACE OF CURB OR CENTER OF DOUBLE YELLOW TO CENTER OF STRIPE.
 2. ALL EXISTING SIGNING TO REMAIN UNLESS OTHERWISE SPECIFIED.



| | | |
|----------------------------------------------------------------------------|----------------------------------------|-----------------------------|
| PRELIMINARY 15% NOT FOR CONSTRUCTION OR RECORDING MAY 2020 | CITY OF MESA ENGINEERING DEPARTMENT | |
| | MESA TRAFFIC CALMING FARMDALE AVE | |
| DRAWN BY: BBS ENGINEER: BSM APPROVED BY: KAC | CHESHIRE TO SIGNAL BUTTE | DRAWING PL01 |
| ACTIVITY: PROJ. NO.: CD0068 | SHEET 1 of 2 | CATALOG NUMBER: A-XXXXXX |

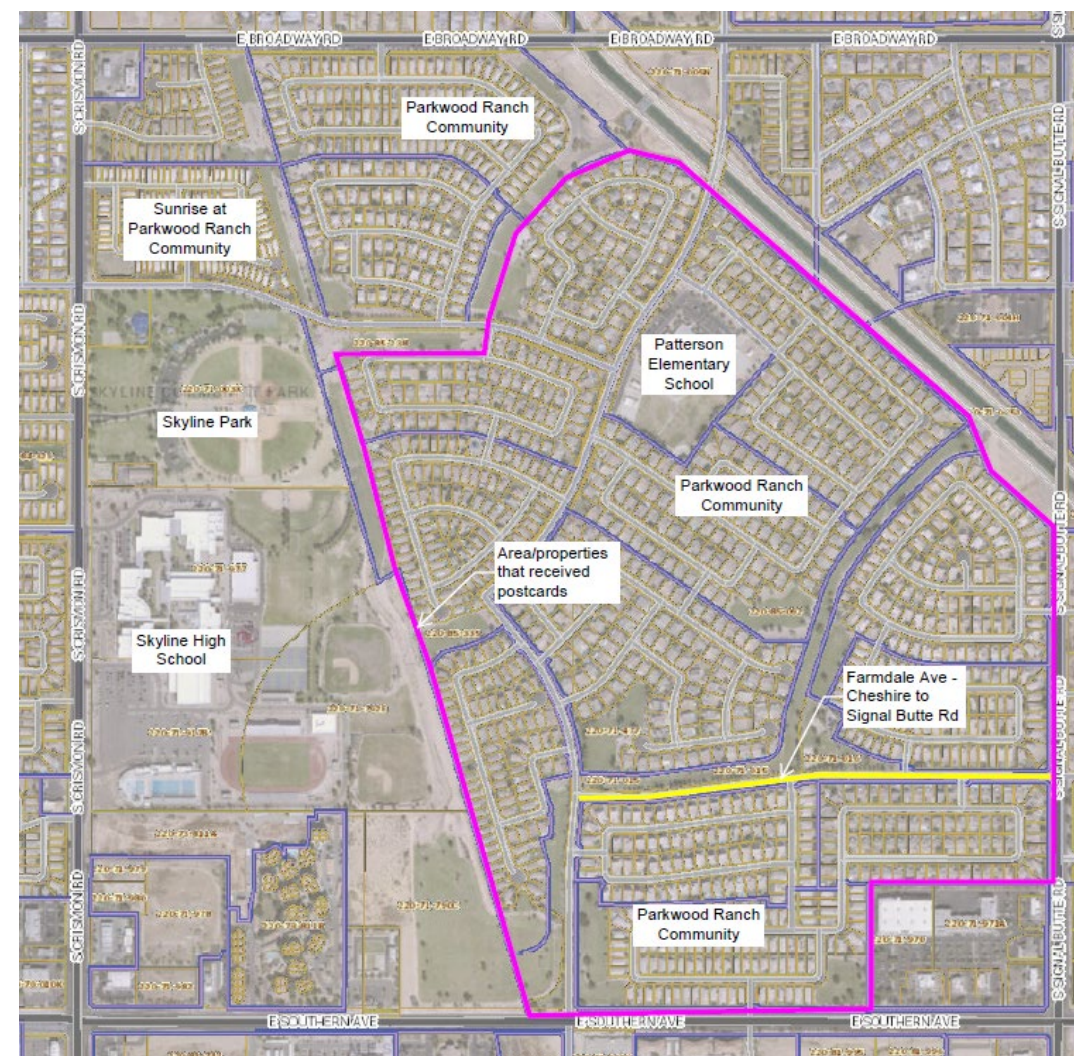
Kimley-Horn
7740 N. 19TH STREET SUITE 300
PHOENIX, AZ 85020
PHONE: 602-844-5500





Outreach Summary

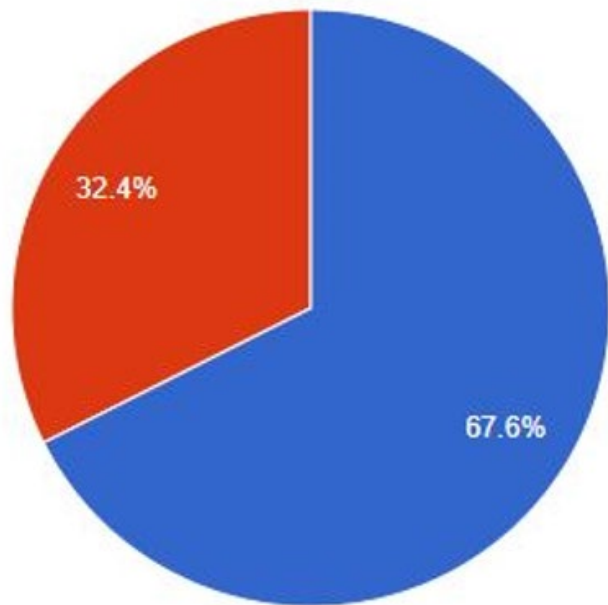
- Postcards sent to over 1,200 property owners
- Social media posts
- Coordination with neighborhood HOA
- Public meeting held February 22, 2022
 - Virtual meeting with presentation and Q&A
- Webpage with active survey
 - mesaaz.gov/streetsafetyplanning
 - Survey was open for two weeks



Community Feedback Continued

Results

- 37 survey responses
 - In Favor? **YES** / **NO**



Summary of Comments:

| In Favor | Not in Favor |
|--------------------------------------------------------------------------------------------------------------------------------------------------------------------------------------------------------------------|------------------------------------------------------------------------------------------------------------------------------------------------------------------------------------------------------|
| <ul style="list-style-type: none"> • Need safety for families & children • Enforcement requests have been exhausted • Multiple speed studies show vehicle speeds are too high | <ul style="list-style-type: none"> • Cost is too much • Speed limit should be increased • No homes face the street • Chicanes will add a new safety hazard |

Timeline & Next Steps

Follow-up Communications

- Post cards sent to the neighborhood
 - Survey results & project status
- Maintain webpage with project information

Design

- Project design has been initiated
- Additional community outreach

Construction

- Upon design completion



Questions/Discussion

